

## February 2010

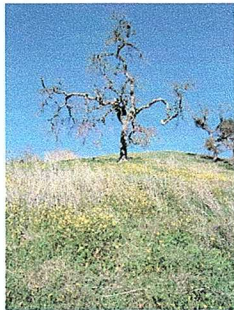
Please join us for our next meeting,  
**February 11th at 7:30PM,**  
 at the Heather Farms Garden Center in Walnut Creek.

Long-time beekeeper Major Branzel will be presenting Beekeeping 101.

### In This Issue

Currently Blooming  
 MDBA Library  
 Getting Started  
 Spring Bee Workshop  
 French Vacation Auction  
 Beekeeper Survey  
 Spring Build-Up  
 Organic Beekeeping  
 Wants/Swaps/Needs

### Currently Blooming



Visit the MDBA Yahoo Group to keep up with what's going on  
<http://pets.groups.yahoo.com/group/mtdiablobees/>  
 Also  
 Bring a bouquet of local flowers to the meeting to show others.

### Getting Started

You will need \$500 to get started with 1 hive, and \$650 to get started with 2 hives.

First, contact Mary Andre to buy bees at the Spring Workshop in Walnut Creek (only \$53/colony).

Second, drive 90 miles to Mann Lake in Woodland near Davis to buy hives and equipment ([www.mannlakeltd.com](http://www.mannlakeltd.com)). Call first to have your order ready!

Buy the following equipment: ASSEMBLED Starter Kit (WW-78) and 10 frame varroa trap with drawer (WW-685, \$20). If you want to buy the Expanded Apiary Kit (WW-742, \$225) with another WW-78. Do not try to build your own hives, as they are cheaper to buy than they can make them yourself. Buy the painted hives, do not paint them yourself, as it will not work out as well!

You will learn how to introduce your bees to the hive at the Spring Workshop, but you must have your hive (and stand) set up by the time your bees are introduced, you will keep them from swarming by setting the colony boxes in early May, AND mixing around the frames in the colony if the colony is large, AND you will cut out any swarm cells as you check your hive every week or so.

You will not harvest honey the first year.

Starting year 2, when your bees have a full spring of nectar and are collecting. Then follow the "Spring Build-up" suggestions in the newsletter below.

You will need to build your own hive stand. Fortunately, this is easy and the following method

### Simple Hive Stand